



PAVIJET
MINI PAVERS

Simple to use
Low maintenance
Labor and equipment cost saving
...one smart investment.

PAVIJET MG7 (forward driving)

MINI PAVERS

The new compact Pavijet Mini Paver is the most recent evolution in the asphalt finishing sector. With an international patent, the Pavijet is the only paver able to lay:

- Gravel
- Sand
- Stones
- Asphalt (hot and cold)
- Concrete

The Pavijet can do many jobs, such as:

- Patching roads
- Road shoulders
- Sidewalks
- Pave around curves
- Parking lots
- Driveways
- Garden and park paths
- Utility trenches
- Sand in courtyards for self-locking bricks

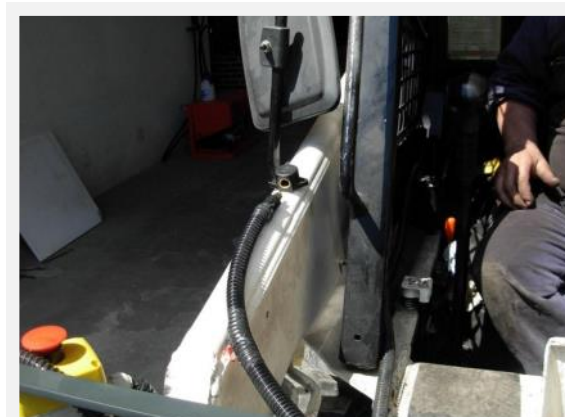
The Pavijet can also bypass any obstacle, like advertising signs, trees, etc. thanks to the retractable screed.

Easy to use and to transport:

- The Pavijet MG7 is a completely hydraulic paver. It can be connected to any kind of skid loader with a minimum of 20 HP (15 kw).
- The attachment is mechanical and the hydraulic connection is done with quick connects.
- The Pavijet can be loaded and unloaded from the truck by the same skid loader.
- Thanks to its compact size, the Pavijet is easy to use and to transport.



MG7 paving a shoulder.



Power connection to skid loader (MG6 D2 & MG7).



Loading hopper from truck



Laying base



Laying sidewalk around gutter

Feeding:

- The PaviJet MG7 can lay hot and cold asphalt, as well as cement, sand and crushed stones. It is possible to use the same machine to spread fill and later to pave. *No other finisher is able to do this.* This machinery is ideal for laying down the sand base before brick paving in patios.
- The central auger brings the material to the screed.
- The auger's speed depends on the speed of the loader's motor.

Functions:

- All the functions are hydraulic (auger, screed lifting and lowering, telescopic screed, hopper's opening and closing).
- Because of the retractable hydraulic screed, the machine is very versatile and is able to avoid obstacles.
- The PaviJet MG7 is controlled from the skid loader and/or with a wireless remote control.
- The wireless remote control allows the operator to have a complete view of the work in front of the machine.

Advantages:

- Variable paving width from 7.87" to 74.80" (0.2m to 1.9m)
- Compact dimensions
- High paving speed, up to 82' per minute
- Avoids obstacles along the way
- Possibility to be load the hopper from the street
- Can pave many different kinds of materials
- Wireless remote controlled
- Machine is completely hydraulic



MG7 screed extended to its full width. Screed can also be heated for use with hot bitumen.

We Make It Possible



MG7 Hand Held Remote Control



MG7 Control Panel



MG7 Control Panel



MG6 D2 Controls



The Pavijet has its own battery, but for jobs that are going to take more than a couple of hours, the unit needs to be connected to the power of the loader.



MG7 Self-Leveling System



MG6 D2 & MG7 Hydraulic Quick Coupler



MG6 D2 & MG7 Quick Attach



MG7 Dampers / Limiters



MG7 Hopper Auger



MG7 closed and ready for transport.



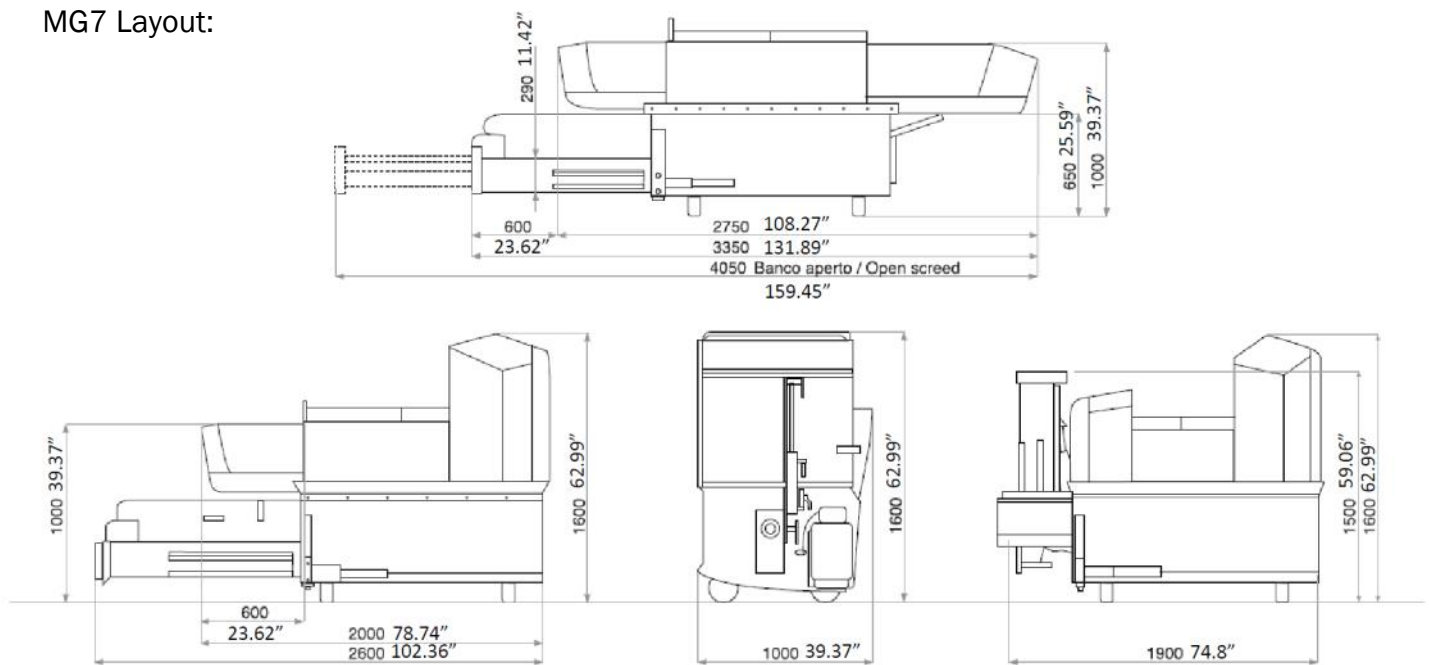
MG7 closed and ready for transport.



MG7 opened up and ready to work.

We Make It Possible

MG7 Layout:



Pavijet MG7 Specifications:

Paving width:	7.87" to 74.80" (.2m to 1.9m)
Paving height:	from -1.97" to 9.84" (-5cm to 25cm)
Hopper capacity:	49.44 cubic feet (1.4 cubic meters) 3.75 tons asphalt
Oil flow:	15.85 gal/min (60 l/min)
Paving speed:	up to 82.02'/min (25m/min)
Hydraulic pressure:	2,611 psi (180 bar)
Weight:	1,567 lbs. (711 kg)
Vibration:	60 Hz
Paving direction:	forward
Paving material:	cold or hot (heated by LPG)
Hot paving temperature:	140 degrees C (284 degrees F)
Feeding:	front and lateral
Commands:	from the loader or by radio control
Functions:	all hydraulic
Auger's diameter:	7.87" (200 mm)
Machinery washing:	with a manual pump
Paint:	anti-corrosive
Colors:	grey and yellow
Certification:	EC conformity

PAVIJET MG6 D2 (reverse driving)

MINI PAVERS



The Pavijet MG6 D2 Mini Paver is able to move backwards and is useful for sidewalks where there is no space to move forward. The concept is the same as the MG7, but the MG6 D2 has two retractable screeds instead of one, with paving width from 15.75" to 90.55" (0.40m to 2.3m).

Features:

- Telescopic hydraulic vibrating screed
- Easy to attach on skid loaders or mini excavators
- Hydraulic hopper which can be loaded from a truck from either the front or side
- Hopper capacity 42.38 cubic feet or 1.57 cubic yards (1.2 cubic meters) (3.2 tons asphalt)
- Screed heating by propane gas
- Central hydraulic mixer
- Internationally patented



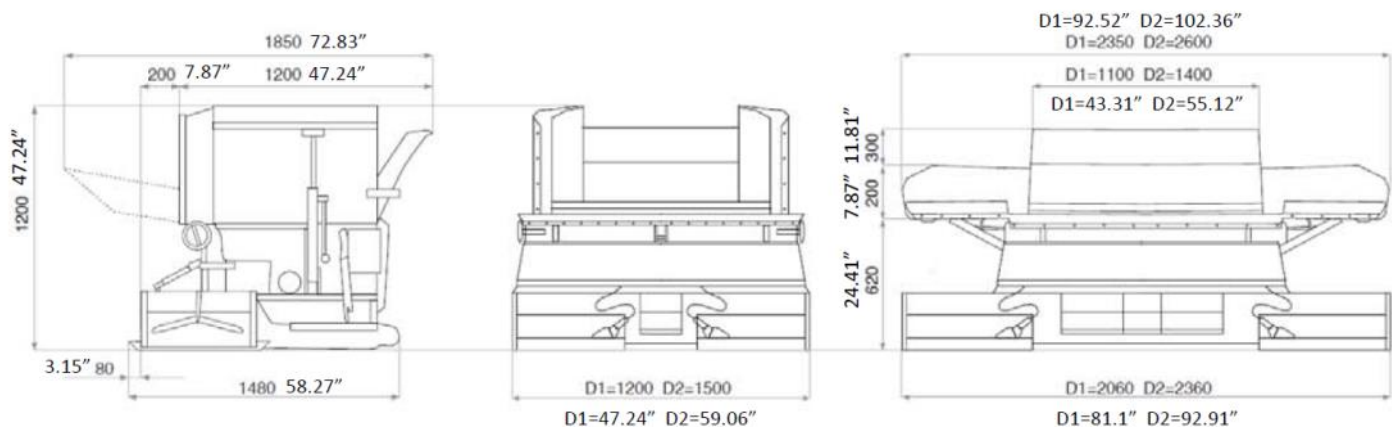
MG6 D2 closed & ready for transport.



MG6 D2 fully open with screeds extended. The MG6 D2 is a center lined paver.

We Make It Possible

MG6 D2 Layout:



Pavijet MG6 D2 Specifications:

Paving width:	15.75" to 90.55" (.4m to 2.3m)
Paving height:	from -1.97" to 4.72" (-5cm to 12cm)
Hopper capacity:	42.38 cubic feet (1.2 cubic meters) 3.2 tons asphalt
Oil flow:	15.85 gal/min (60 l/min)
Paving speed:	up to 82.02'/min (25m/min)
Hydraulic pressure:	2,611 psi (180 bar)
Weight:	981 lbs. (445 kg)
Vibration:	60 Hz
Paving direction:	reverse
Paving material:	cold or hot (heated by LPG)
Hot paving temperature:	140 degrees C (284 degrees F)
Loading:	front and lateral
Commands:	hydraulic, from aboard the machinery
Bar, hoppers, auger moving:	hydraulic
Machinery washing:	with a manual pump
Paint:	anti-corrosive
Available colors:	grey or yellow
Certification:	EC conformity

Self-Propelled Mini Paver

DGV 165-40



The Self-Propelled Mini Paver DGV 165-40 is a stand alone machine that is ideal for paving cycle tracks, walkways, parking lots and trenches as well as for different kinds of road repair. The DGV-165-40 can lay hot and cold asphalt, cement, sand and crushed stone. The paving width ranges from 15.75" to 64.96" (0.4m to 1.65m) with a working thickness of -1.18" to 5.91" (-3cm to 15cm). The DGV 165-40 is completely hydrostatic and is controlled directly by the operator.



We Make It Possible

Self-Propelled Mini Paver DGV 165-40 Specifications:

Paving width:	15.75" to 64.96" (.4m to 1.65m)
Paving height:	from -1.18" to 5.91" (-3cm to 15cm)
Hopper capacity:	35.31 cubic feet (1 cubic meter)
Paving speed:	up to 82.02'/min (25m/min)
Weight:	1,852 lbs. (840 kg)
Dimensions:	Height 56.69" (1.44m) Length 95.28" (2.42m) Width 41.34" (1.05m)
Vibration:	60 Hz
Paving material:	cold or hot (heated by LPG)
Hot paving temperature:	140 degrees C (284 degrees F)
Loading:	Lateral
Controls:	Hydrostatic from the machine
Screed, hoppers, auger:	Hydraulic
Machinery washing:	with a manual pump
Paint:	anti-corrosive

Spraycat Skid Mounted Bitumen Sprayer

The Spraycat is a skid mounted bitumen sprayer that easily attaches to a skid loader. This great innovation in the field of spraying bituminous emulsion has earned the Spraycat an international patent.

The Spraycat is completely hydraulic and attaches to any type and brand of skid loader or self-propelled construction hydraulic machine. The unit can be mounted on the bucket or directly with the mechanical coupling of the loader. The operation is performed directly by the machine to which it is applied.

The Spraycat comes equipped with:

- Hydraulic connections to the loader
- Spray bar with a coverage of 1.6' to 6.6', with horizontal sliding system capable of left-right movement
- Hand applicator with hose length of 16.4' to reach corners and places not accessible with the skid loader
- Tank
- Plastic bucket for washing after work
- Anti-corrosive paint
- CE certification
- Dimension: 3.93' x 2.62' x 1.64'
- Weight: 264.5 lbs



We Make It Possible

Who We Are

Hitek Equipment, Inc. has been in business since December of 1990. Now going on over 30 years, we have always specialized in bringing unique products to the North American market. Primarily working in the corrugated box industry, we have also brought in equipment for recycling, waste water treatment and now construction.

One of our newest machines is the Malavasi Pavijet. The Pavijet is a minipaver that connects to your skid loader or loader. The Pavijet is unique because of its flexibility and performance. The Pavijet will spread hot and cold asphalt, cement, sand, crushed stones and other materials.

All our equipment is simple to use, low in maintenance, and parts and service come directly from our Kenosha, Wisconsin based facility. There is never a need to call another country!

Malavasi G. Srl was founded in the early sixties in a small town near Modena, Italy. What started as a small artisan engineering business in the earthmoving industry, turned years later into the production and sales of road construction machinery.

Thanks to the excellent synergy among the different departments – production, technical, administration and commercial – Malavasi quickly achieved competitiveness and great market recognition, initially serving local and national customers and then opening up to over 30 countries in the world.

Over 50 years experience in satisfying customer needs have allowed us to design and develop patented road construction equipment that greatly improve the quality of road works, such as hydraulic cylinders and telescopic benches for road pavers, and last but not least the best performing MINI PAVERS on the market despite being considered the smallest in the world.

Take a look and see what Hitek and Malavasi can do for you.



8920 58th Place #700, Kenosha, WI 53144
Phone (262) 842-1700 Fax (262) 842-1710
Website: www.pavijet.com Email: info@minipaver.com